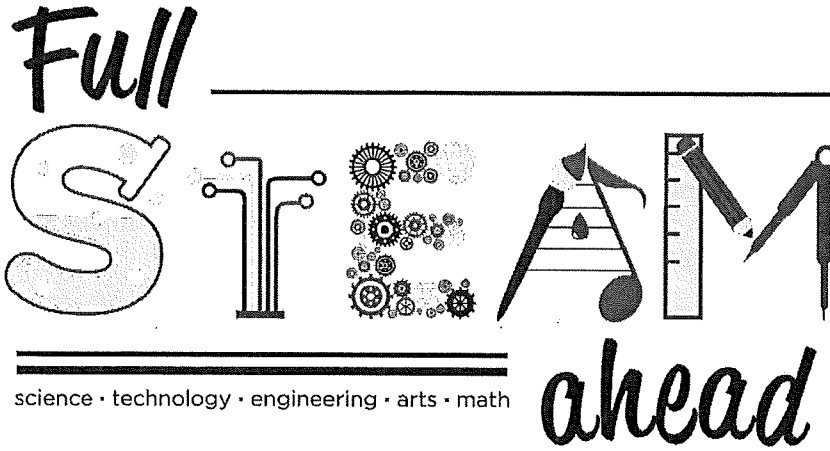


# OWL'S HOOT



THE OFFICIAL NEWSLETTER OF CARROLLWOOD ELEMENTARY SCHOOL



science • technology • engineering • arts • math

## A Note from Ms. Stover

It's been so nice seeing our students on campus and having a feel of normalcy even though our campus and procedures are different. Our students have been doing a great job wearing their mask through-out the school day. I appreciate the health and safety you have instilled in your child and the precautions they are taking. On campus we are taking the necessary steps to maintain a clean and COVID free environment. However, the first line of defense begins at home. Each morning it is important that you self-monitor your child by doing the following:

- Do a temperature check
- Are they experiencing any muscle ache or chills
- Have they experienced any gastrointestinal symptoms (nausea, vomiting, diarrhea, or loss of appetite)
- Are they experiencing a sore throat

If your child is stating they don't feel well or experiencing any of the above symptoms, please have them stay home and monitor for illness. This will help us mitigate the spread of germs. This year we won't be recognizing students with Perfect Attendance or Faithful Attendance. We don't want any family to feel the pressure of being at school even when you're feeling sick. Yes, attendance is important for academic growth, but keeping everyone healthy is even more important.

Parents, now that we are finishing our 3rd week of school, it's important to know that your child must stay the course with either eLearning or Brick and Mortar. We must stabilize our classrooms, maintain class size, and prepare for our diagnostic assessments. Changes will only be made due to extenuating circumstances. An appointment for a phone conference will need to be made with me prior to any changes being made. All intents are in place until the end of December.

Have you noticed the physical improvements being made at Carrollwood? The referendum tax has provided us with a new drainage system and most recently new exterior paint. Our painters are completing the finishing touches to our campus. It has been a long time since our school has been painted and it needed a face lift. The new drainage system has been working beautifully with all this rain we have been experiencing. Coming soon you will see repairs being made to our marquee.

Finally, I would like to wish all of our Grandparents a "Happy Grandparents' Day!" The staff, PTA, and I are sorry we are unable to plan our special breakfast celebration with you this school year but look forward to resuming this event next year.



**Mondays  
12:55  
Dismissal**

**No Sign Outs**  
After 12:15 on Mon  
After 1:15 Tue-Fri

IReady Diagnostic  
Testing Begins

**Yearbook Pickup**  
Monday 9/14  
10-11 am  
1:30-2:30 pm  
Cafeteria car loop

9/30 Student Of The Month

# COUNSELOR'S CORNER

Welcome back Owls!!

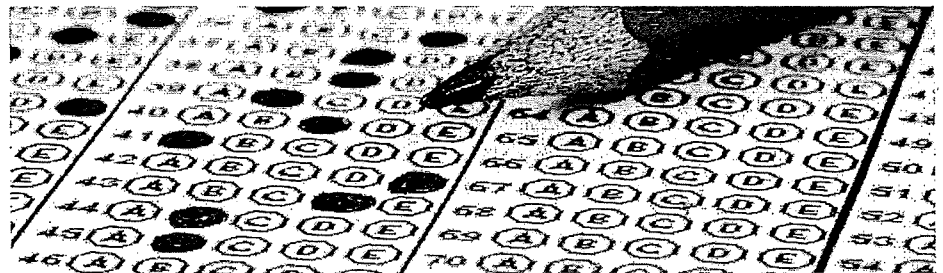
I have enjoyed seeing students face to face and can't wait to start my lessons. This month I will be going into classes to talk about bullying. Students will learn how to "Recognize, Report, and Refuse." Encourage your child to tell a trusted adult if they see bullying, or a bully is targeting them. Parents can report bullying to the teacher, a student support staff member (counselor, social worker, psychologist, resource officer, or school nurse), administration, or via the Hillsborough County School District's website.

The character trait for the month is self-control. Self-control is being able to control your thoughts, emotions, and actions. Most kids are just learning how to have self-control as they begin elementary school. If your child is struggling with self-control, there are ways to help. According to Understood.org, you can help your child by being clear about expectations, helping them identify their feelings, play games like freeze dance and Simon says to help them practice controlling their behaviors, rewarding them for showing self-control, and praising their efforts. They should be learning about self-control in their class this month. I hope you were all able to see the student services introduction video at the virtual open house or during smart start week.

I am always here to support parents, teachers, and students and am only a phone call away (813-975-7640 Ext. 228). Let's build brighter futures together during the 2020-2021 school year. -Mrs. Kreisher, School Counselor

## TESTONI'S TICKER

NEWS FROM THE ASSISTANT PRINCIPAL



September kicks off our Fall assessment windows for all of our eLearners and Brick and Mortar students. Students will be evaluated through our iReady diagnostic, along with district designed baseline assessments, our new 3rd-5th grade Achieve3000 digital platform and our K-2nd SIPPS learning tools. Schedules and information for testing will be shared through canvas, parent link and the Thursday folder.

The districts testing procedures and protocols, will look slightly different for our elearning students. First, all students with an IEP or 504 will be provided their accommodations in relation to the expectations of the assessment and it's testing conditions. Students will need to be monitored by a testing administrator from the school, through zoom, throughout the length of their testing period. Students will be placed in small monitored testing groups of 5-10 students. The administrator may be the eLearning teacher or an instructor from our campus. During your elearner's testing period, we ask that you eliminate any distractions such as music or loud noise, along with any learning aides ( visual aides, manipulative, notes, and parental support) during your eLearners testing window. Any outside support during your eLearners assessment period can lead to an invalidated score. Your eLearning testing administrator will provide directions on what students will need to complete their assessments. The results of our student's assessments guide our instructors and staff in making precise and quality decisions about your student's learning. Thank you for supporting our learner's as they prepare for testing. -Mr. Testoni

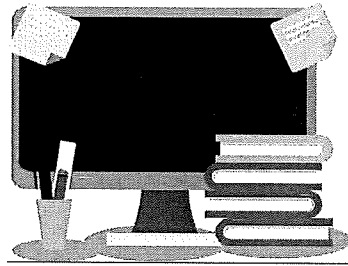


notes from the  
**NURSE**

**IF THERE'S A DOUBT,  
KEEP THEM OUT.**

Please continue to do wellness checks each morning and remember, don't forget to get your flu shot.

# MEDIA *Center*



Welcome back to school and to another great year in Media and Technology! I have missed our students so much!! Things might look differently this school year, but I am looking forward to creatively continuing to provide a dynamic media program for our students.

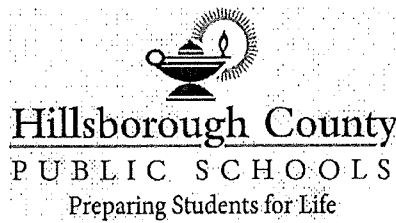
This is definitely "the year of technology". Along with our E-learners, students at Carrollwood are immersed in an environment that provides opportunity for technology integration. Our brick and mortar students in grades 3 - 5 have been assigned a laptop for school use through our Tech Innovate 1:1 laptop program. In these next couple of weeks all students in grades 3 - 5 will participate in our Tech Innovate Launch in the Media Center. Great news! Our K - 2 classrooms will receive seven Chromebooks each for student use. Throughout the school year I will be working with teachers and students to provide assistance with technology and to provide targeted instruction.

Carrollwood students love to read and visit the MC! The Media Center will be opening soon in some capacity. Now more than ever we will be utilizing our digital resources. More information about our digital resources, instruction, and the opening of the Media Center will be forthcoming. If your student has a library book checked out from last school year, please make it a priority to return the checked-out book or pay the replacement fee. Letters will be sent home with students as applicable. As always, thanks so much for your dedication to literacy and for your support of the media program. -Melissa Irvin, Media Specialist

*happy fall* Y' ALL



Junta Directiva Escolar  
 Melissa Snively, Presidenta  
 Steve P. Cona III, Vicepresidente  
 Lynn L. Gray  
 Stacy A. Hahn, Ph.D.  
 Karen Perez  
 Tamara P. Shamburger  
 Cindy Stuart



Superintendente de Escuelas  
 Addison G. Davis

September 11, 2020

Dear Parent/Guardian:

All educators in Florida are monitored to ensure they meet certification and training requirements as mandated by law. Per Florida Statute 1012.42, when a teacher is assigned teaching duties out of the field in which the teacher is certified, the parents of all students in the class shall be notified in writing.

Hillsborough County Public Schools is committed to providing quality instruction for all students and does so by employing the most qualified individuals to teach and support each student in the classroom. The district is assisting our teachers by developing an *Individual Professional Development Plan* to complete the requirements needed to become in-field.

All of our teachers are certified to teach, although some of them are currently out-of-field and are working on additional areas of certification. You have the right to know the professional qualifications of the teachers or paraprofessionals who instruct your child. Federal law allows you to ask for certain information about your child's teachers and requires us to give you this information in a timely manner if you ask for it. If you would like more information, please contact the school at (813-975-7640).

The table below lists teachers who are currently out-of-field.

Sincerely,

MaryJo C. Stover  
 Principal  
 Carrollwood Elementary

Teacher	Classes Taught (Assignments)	Assignment Start Date	Certification(s) Held	Out of Field Area/Classes
Kelly Apple	VE ELA/Math	August 24,2020	Elem. Ed (K-6) ESE (K-12)	ESOL
Emily Fegan	VE ELA/Math	August 24, 2020	Elem. Ed (1-6) ESOL	ESE K-12
Tiffany Pagan	VE ELA/Math	August 24,2020	ESE K-12	Elementary Ed ESOL
Scott Wagner	Kindergarten	August 24, 2020	PreKindergarten/ Primary Ed Age 3- 3 <sup>rd</sup> grade	ESOL
Jayma Whittington	1 <sup>st</sup> Grade Teacher with ELL students	August 24,2020	Elem. Ed (K-6)	ESOL
David Snow	5 <sup>th</sup> grade ELA with ELL students	August 24, 2020	Elem. Ed (K-6)	ESOL
Michael Terry	Intellectual Disability	August 24,2020	ESE (K-12))	ESOL